



## RESEARCH AND DEVELOPMENT LABORATORY

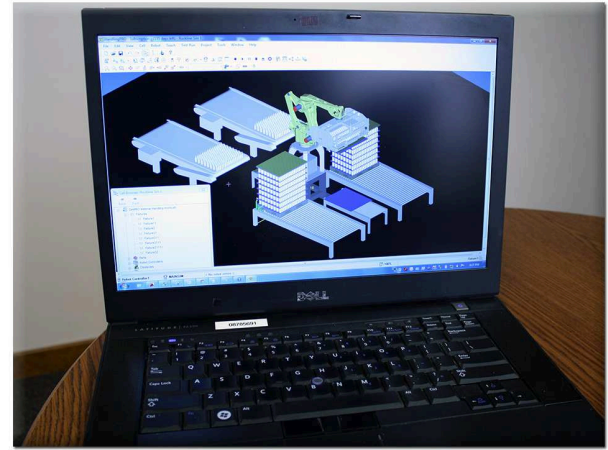
Kaufman Engineered Systems has invested into its Research and Development Lab which consists of all the tools needed to customize a system to fit your unique product including:

- Three FANUC robots and access to all models
- Multiple customizable end-of-arm tools
  - full layer palletizing/depalletizing
  - vacuum
  - bag
  - clamp
  - custom designed
- Conveyors
  - mat-top
  - roller
  - case

The lab is an invaluable tool when testing customers' products. It allows Kaufman engineers to verify important process parameters before, during and after the quoting process. With dedicated testing for:

- Robot speed and utilization
- Product pick ability and testing
- Conveying characteristics
- Solution proving

With tools to verify important process parameters before quoting takes the "unknown" out of the equation and reassures you through extensive up front testing that your system solution has been designed from factual data.



CONTACT AN ACCOUNT MANAGER  
AT [INFO@KAUFMANENGSYS.COM](mailto:info@kaufmanengsys.com)  
OR 419-878-9727 TO START  
DESIGNING YOUR CUSTOMIZED  
ROBOTIC EQUIPMENT TODAY

Ver. May 2014